



### PD Imp R3 – Short operational manual

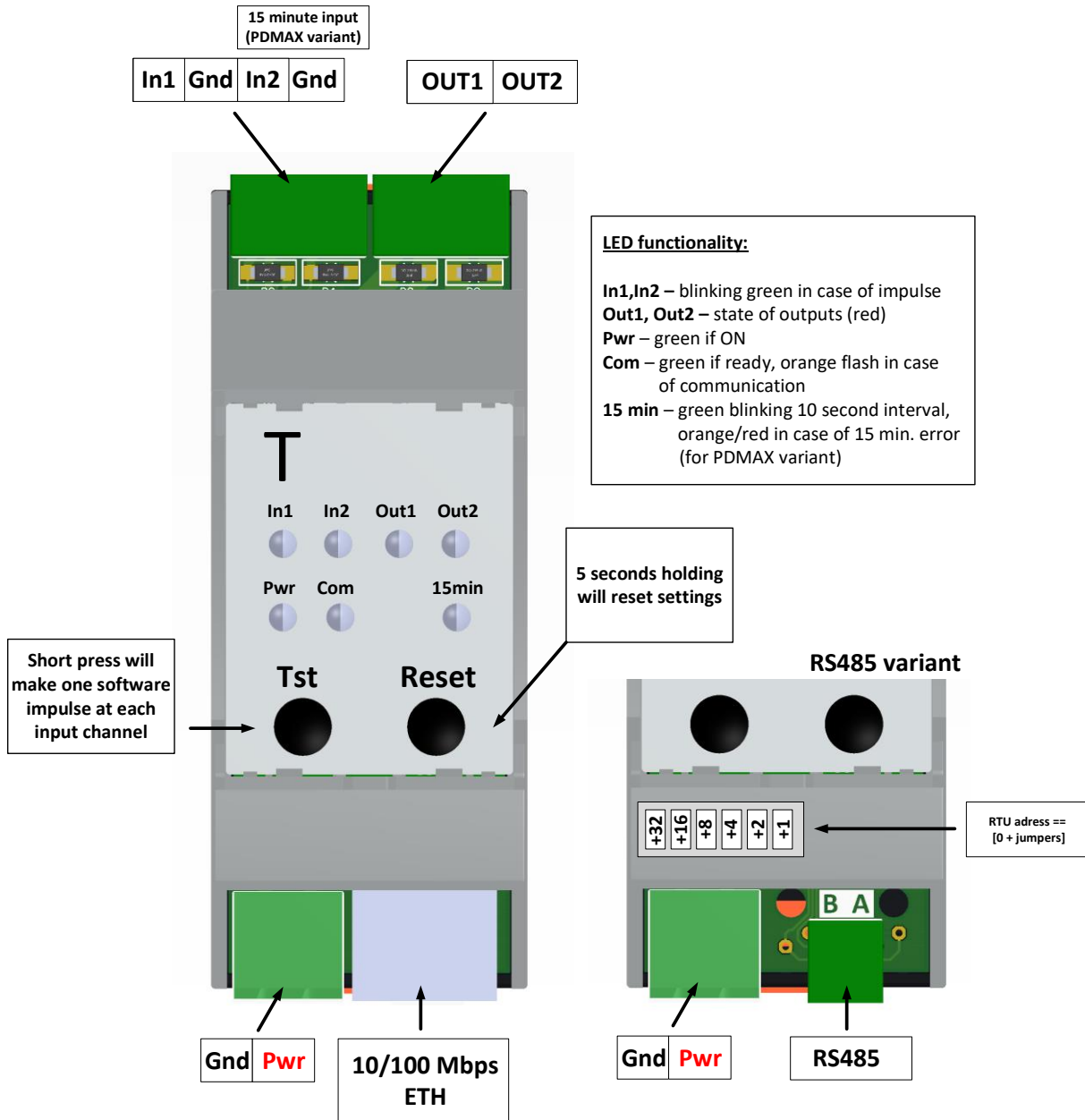


Fig. 1. - Module overview

## Basic parameters:

**Number of inputs:** 2 (2x imp + 1x 15min)

**Powering:** +12VDC ... 24VDC, consumption < 25mA

**ModBUS RTU:** 19200 bps, 8 bit, Even parity, 1 stop bit

**ModBUS RTU address range:** 0-63

**ModBUS TCP:** default: 192.168.0.100, 255.255.255.0, 192.168.0.1 port 502

**Impulse inputs:** Open collector sensing, minimum impulse duration **1ms (500 Hz DC: 50%)**

## Reset:

Hold RESET (right button) for at least 5 seconds, LED will flash orange, then release.

## ModBUS address:

Input registers	
0	counter 0 actual bits 15-0
1	counter 0 actual bits 31-16
2	counter 0 actual bits 47-32
3	counter 0 actual bits 63-48
4	counter 1 actual bits 15-0
5	counter 1 actual bits 31-16
6	counter 1 actual bits 47-32
7	counter 1 actual bits 63-48
8	
9	
10	
11	
12	previous 15 min interval total impulse count
13	
14-103	impulse count of 10 seconds interval from t0 up to 15 min (90 registers)
104	which 10 second interval of 15 min currently running
105	0 == initial value, register, value in registers <b>12-13 not valid</b>
	1 == first 15 min impulse arrived, values from <b>14-103 are valid, 12-13 not valid</b>
	2 == all values are valid, 15 min impulses running OK
	3 == all values are valid, 15 min impulse does not come after power-up
	4 == 15 min impulse does not come at least twice

Holding registers	
0	counter 0 preset bits 15-0
1	counter 0 preset bits 31-16
2	counter 0 preset bits 47-32
3	counter 0 preset bits 63-48
4	counter 1 preset bits 15-0
5	counter 1 preset bits 31-16
6	counter 1 preset bits 47-32
7	counter 1 preset bits 63-48
8	
9	
10	
11	
12,13,14,15	

16,17,18,19	IP address of the device (default is: 192,168,0,100)	(ETH)
20,21,22,23	IP subnet mask (default is: 255,255,255,0)	(ETH)
24,25,26,27	IP gateway (default is: 192,168,0,1)	
28	TCP port of ModBUS communication (default is: 502)	(ETH)
29,30,31,32,33,34	MAC address (default is unique from factory)	(ETH)

Coils		
0	if set save counter 0 preset to counter 0 actual, coil resets automatically	
1	if set save counter 1 preset to counter 1 actual, coil resets automatically	
2		
3		
4	If set module will load new IP settings and automatically make reset (ETH)	
5	Control for OUT1 relay (depends on product variant)	
6	Control for OUT2 relay (depends on product variant)	